

OFFERED AT \$425,000

2831 Fort Missoula Road Bldg, #2, Suite 203

Missoula, MT 59804



ERA Lambros

Missoula County Monthly Market Update

COMMERCIAL SALES

- The average number of Days on Market is down 50% in August and down 24% year to date
- New Listings show no change
- Pending Sales are down 9%
- Closed Sales are down 33%
- The Average Sales Price is up 2% and up 28% year to date
- 89% of the Original Listing Price is received at closing

3011 American Way Missoula, MT 59808

Office: (406) 532-9200 | Toll Free: (888) 735-7653 | Fax: (406) 532-9330

WWW.ERALAMBROSCOMMERCIAL.COM

Missoula County

Commercial Sales

0%

Change in
New Listings

-33%

Change in
Closed Sales

+2%

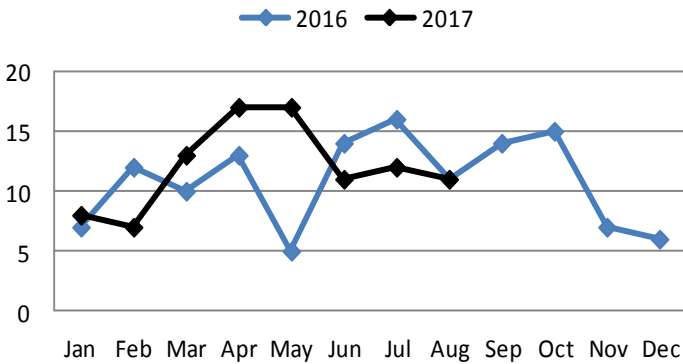
Change in
Average Sales
Price

August

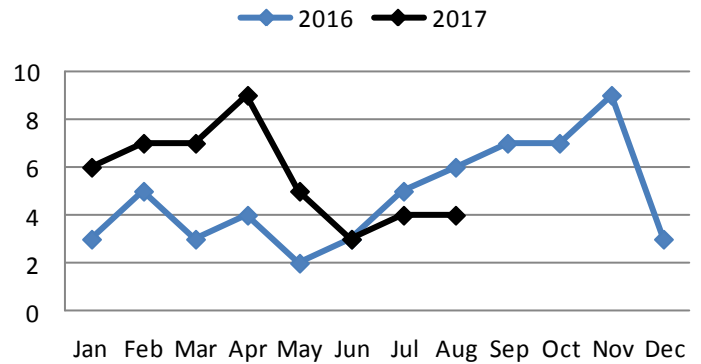
Year to Date

	2016	2017	+/-	2016	2017	+/-
New Listings	11	11	0%	90	95	+6%
Pending Sales	11	10	-9%	32	45	+41%
Closed Sales	6	4	-33%	31	45	+45%
Median Sales Price	\$197K	\$280K	+42%	\$350K	\$525K	+50%
Average Sales Price	\$255K	\$259K	+2%	\$585K	\$750K	+28%
Avg. % of Original List Price Received	74%	89%	+15%	87%	90%	+3%
Average Days on Market Until Sale	516	260	-50%	368	279	-24%

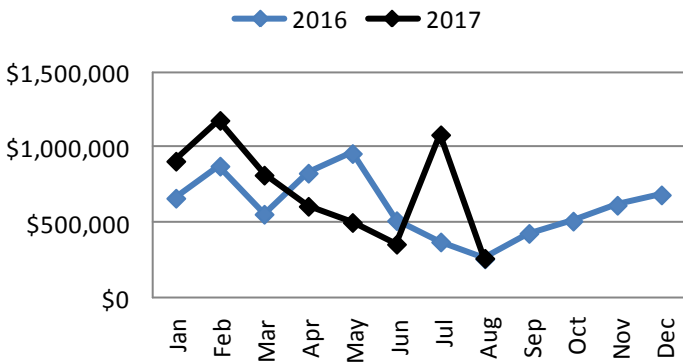
New Listings



Closed Sales



Average Sales Price



Average Days on Market

