



ERA Lambros

Ravalli County Monthly Market Update

RESIDENTIAL

- The average number of Days on Market is down 38% in August and down 4% year to date
- New Listings are up 6%
- Closed Sales are up 10%
- The Average Sales Price is down 16% and up 8% year to date
- 96% of the Original Listing Price is received at closing

514 North 1st Street Hamilton, MT 59840
Office: (406) 363-6668 | Toll Free: (888) 734-7653 | Fax: (406) 363-3252

5505 Eagle Court, Suite B Florence, MT 59833
Office: (406) 273-7777 | Fax: (406) 532-9677

WWW.ERALAMBROS.COM

Ravalli County

Residential

+6%

Change in
New Listings

+10%

Change in
Closed Sales

-16%

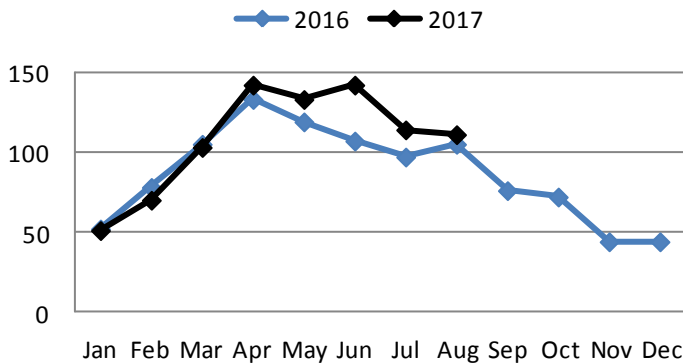
Change in
Average Sales
Price

August

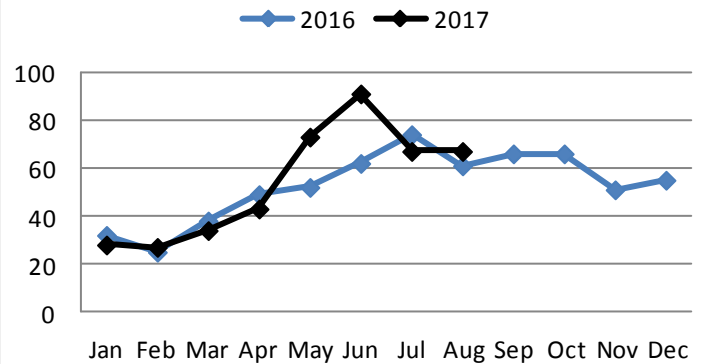
Year to Date

	2016	2017	+/-	2016	2017	+/-
New Listings	105	111	+6%	798	872	+9%
Closed Sales	61	67	+10%	395	432	+9%
Median Sales Price	\$249K	\$260K	+4%	\$240K	\$265K	+10%
Average Sales Price	\$314K	\$263K	-16%	\$278K	\$299K	+8%
Avg. % of Original List Price Received	96%	96%	0%	95%	96%	+1%
Average Days on Market Until Sale	232	143	-38%	185	178	-4%

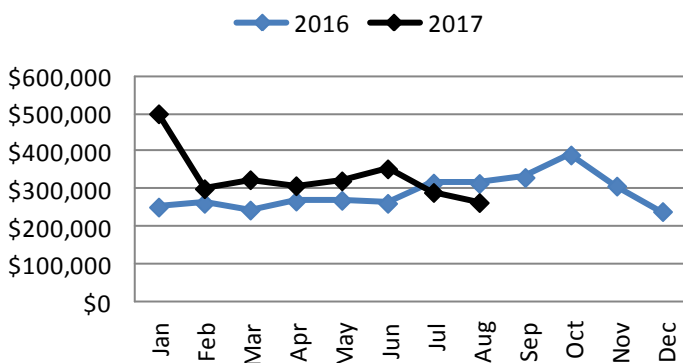
New Listings



Closed Sales



Average Sales Price



Average Days on Market

