



ERA Lambros

Missoula County Monthly Market Update

RESIDENTIAL

- The average number of Days on Market is down 8% in May and down 1% year to date
- New Listings are up 13%
- Closed Sales are down 1%
- The Average Sales Price is up 10% and up 15% year to date
- 99% of the Original Listing Price is received at closing

3011 American Way Missoula, MT 59808

Office: (406) 532-9200 | Toll Free: (888) 735-7653 | Fax: (406) 532-9330

WWW.ERALAMBROS.COM

Missoula County

Residential

+13%

Change in
New Listings

-1%

Change in
Closed Sales

+10%

Change in
Average Sales
Price

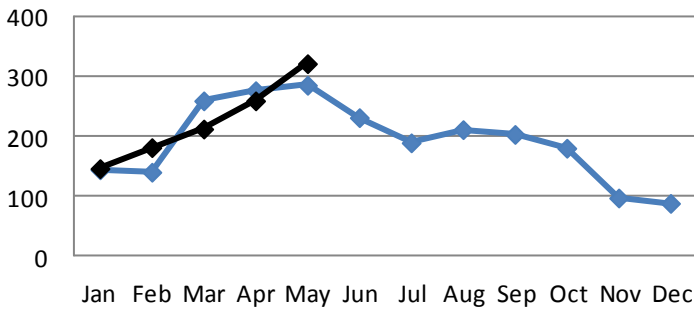
May

Year to Date

	2016	2017	+/-	2016	2017	+/-
New Listings	285	321	+13%	1,112	1,125	+1%
Pending Sales	193	225	+17%	722	778	+8%
Closed Sales	157	155	-1%	527	553	+5%
Median Sales Price	\$255K	\$269K	+5%	\$240K	\$267K	+11%
Average Sales Price	\$277K	\$305K	+10%	\$268K	\$307K	+15%
Avg. % of Original List Price Received	98%	99%	+1%	97%	97%	0%
Average Days on Market Until Sale	142	130	-8%	151	149	-1%

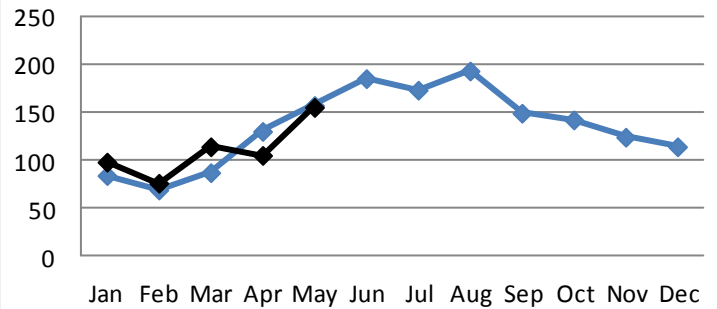
New Listings

— 2016 — 2017



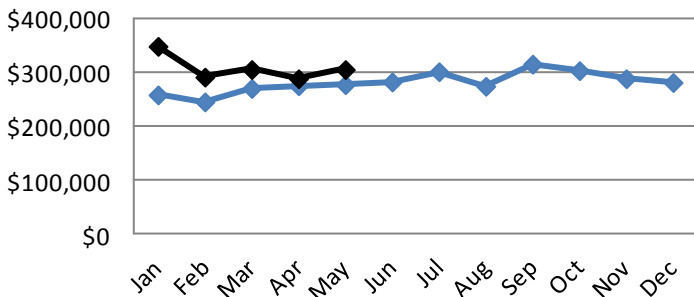
Closed Sales

— 2016 — 2017



Average Sales Price

— 2016 — 2017



Average Days on Market

— 2016 — 2017

