



## ERA Lambros

### Missoula County Monthly Market Update

#### LAND

- The average number of Days on Market is up 128% in May and up 58% year to date
- New Listings are up 69%
- Closed Sales are up 42%
- The Average Sales Price is down 7% and down 23% year to date
- 88% of the Original Listing Price is received at closing

3011 American Way Missoula, MT 59808

Office: (406) 532-9200 | Toll Free: (888) 735-7653 | Fax: (406) 532-9330

[WWW.ERALAMBROS.COM](http://WWW.ERALAMBROS.COM)

# Missoula County

## Land

**+69%**

Change in  
New Listings

**+42%**

Change in  
Closed Sales

**+128%**

Change in  
Days on Market

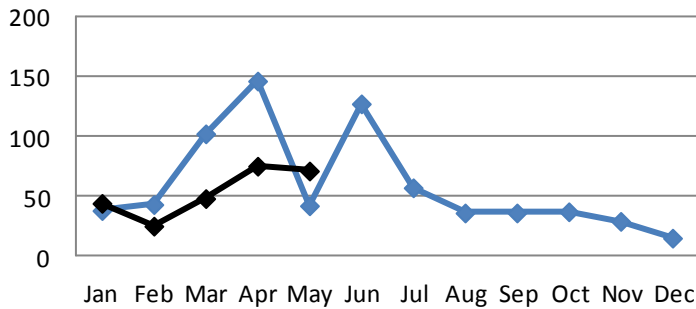
### May

### Year to Date

	2016	2017	+/-	2016	2017	+/-
New Listings	42	<b>71</b>	+69%	371	<b>265</b>	-29%
Pending Sales	30	<b>39</b>	+30%	101	<b>128</b>	+27%
Closed Sales	26	<b>37</b>	+42%	88	<b>97</b>	+10%
Median Sales Price	\$76K	<b>\$99K</b>	+30%	\$94K	<b>\$85K</b>	-10%
Average Sales Price	\$148K	<b>\$137K</b>	-7%	\$158K	<b>\$122K</b>	-23%
Avg. % of Original List Price Received	92%	<b>88%</b>	-4%	86%	<b>90%</b>	+4%
Average Days on Market Until Sale	390	<b>889</b>	+128%	457	<b>724</b>	+58%

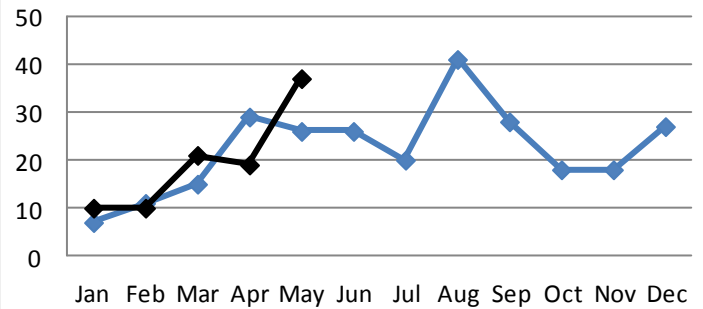
### New Listings

— 2016 — 2017



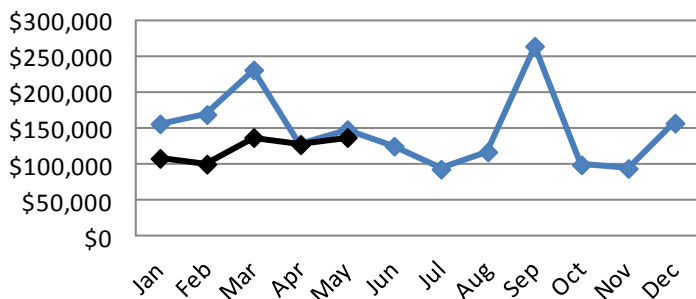
### Closed Sales

— 2016 — 2017



### Average Sales Price

— 2016 — 2017



### Average Days on Market

— 2016 — 2017

