



OFFERED AT \$1,950,000

4685 Expressway, Missoula, MT 59808

ERA Lambros

Missoula County Monthly Market Update

COMMERCIAL SALES

- The average number of Days on Market is down 61% in May and down 23% year to date
- New Listings are up 240%
- Pending Sales are up 33%
- Closed Sales are up 150%
- The Average Sales Price is up 3% year to date
- 89% of the Original Listing Price is received at closing

3011 American Way Missoula, MT 59808

Office: (406) 532-9200 | Toll Free: (888) 735-7653 | Fax: (406) 532-9330

WWW.ERALAMBROSCOMMERCIAL.COM

Missoula County

Commercial Sales

+240%

Change in
New Listings

+150%

Change in
Closed Sales

-48%

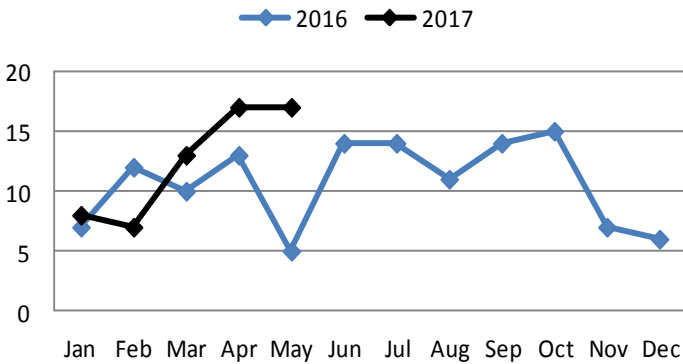
Change in
Average Sales
Price

May

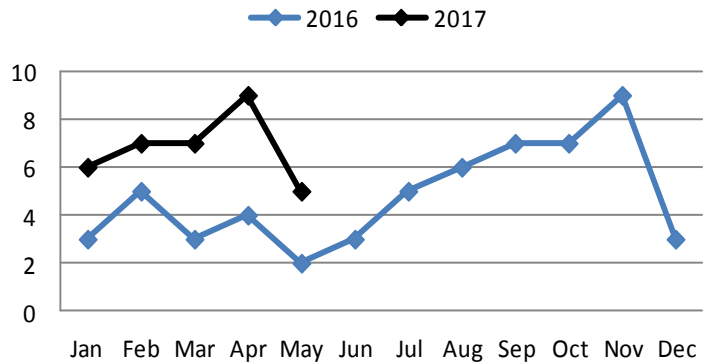
Year to Date

	2016	2017	+/-	2016	2017	+/-
New Listings	5	17	+240%	48	62	+29%
Pending Sales	3	4	+33%	14	28	+100%
Closed Sales	2	5	+150%	17	34	+100%
Median Sales Price	\$958K	\$373K	-61%	\$485K	\$667K	+38%
Average Sales Price	\$958K	\$498K	-48%	\$778K	\$804K	+3%
Avg. % of Original List Price Received	65%	89%	-24%	87%	90%	+3%
Average Days on Market Until Sale	344	132	-61%	352	270	-23%

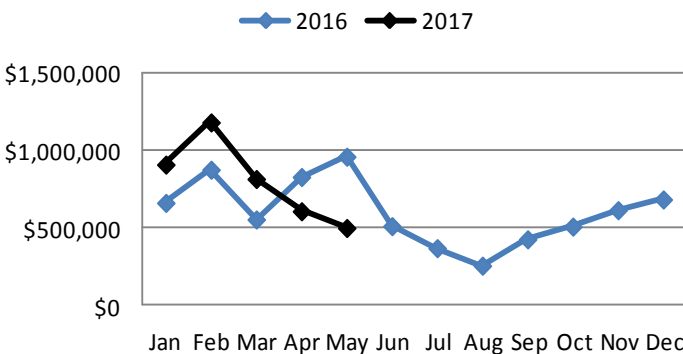
New Listings



Closed Sales



Average Sales Price



Average Days on Market

