



## ERA Lambros

### Ravalli County Monthly Market Update

#### RESIDENTIAL

- The average number of Days on Market is up 19% in May and up 14% year to date
- New Listings are up 12%
- Closed Sales are up 40%
- The Average Sales Price is up 31% year to date
- 96% of the Original Listing Price is received at closing

514 North 1st Street Hamilton, MT 59840  
Office: (406) 363-6668 | Toll Free: (888) 734-7653 | Fax: (406) 363-3252

5505 Eagle Court, Suite B Florence, MT 59833  
Office: (406) 273-7777 | Fax: (406) 532-9677

[WWW.ERALAMBROS.COM](http://WWW.ERALAMBROS.COM)

# Ravalli County

## Residential

**+12%**

Change in  
New Listings

**+40%**

Change in  
Closed Sales

**+19%**

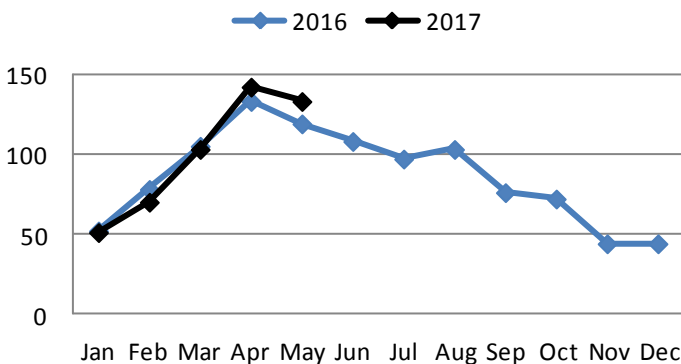
Change in  
Average Sales  
Price

### May

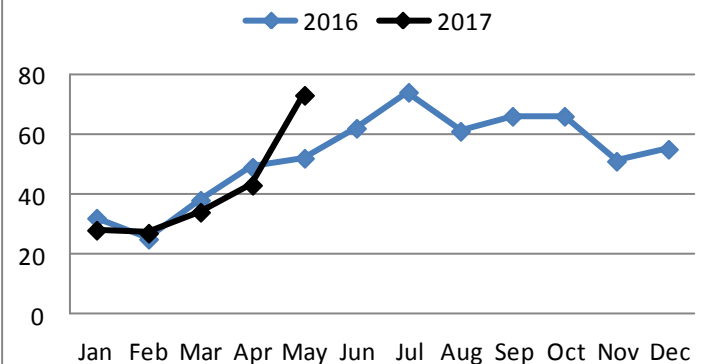
### Year to Date

	2016	2017	+/-	2016	2017	+/-
New Listings	119	<b>133</b>	+12%	487	<b>499</b>	+2%
Closed Sales	52	<b>73</b>	+40%	198	<b>206</b>	+4%
Median Sales Price	\$233K	<b>\$285K</b>	+28%	\$233K	<b>\$266K</b>	+14%
Average Sales Price	\$269K	<b>\$321</b>	+19%	\$259K	<b>\$340K</b>	+31%
Avg. % of Original List Price Received	96%	<b>96%</b>	0%	96%	<b>94%</b>	-2%
Average Days on Market Until Sale	165	<b>196</b>	+19%	182	<b>208</b>	+14%

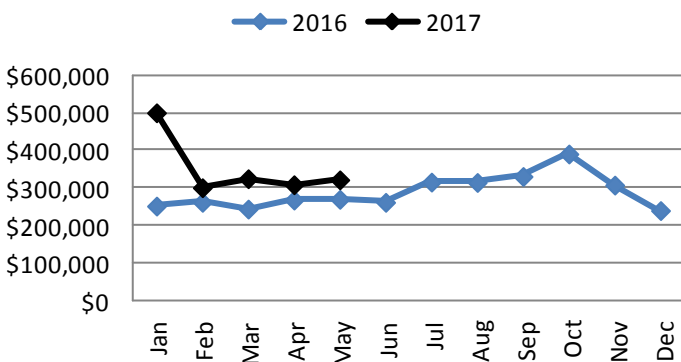
### New Listings



### Closed Sales



### Average Sales Price



### Average Days on Market

