



ERA Lambros

Ravalli County Monthly Market Update

LAND

- The average number of Days on Market is up 23% in May and up 23% year to date
- New Listings are up 18%
- Closed Sales are up 65%
- The Average Sales Price is down 1% year to date
- 92% of the Original Listing Price is received at closing

514 North 1st Street Hamilton, MT 59840
Office: (406) 363-6668 | Toll Free: (888) 734-7653 | Fax: (406) 363-3252

5505 Eagle Court, Suite B Florence, MT 59833
Office: (406) 273-7777 | Fax: (406) 532-9677

WWW.ERALAMBROS.COM

Ravalli County

Land

+18%

Change in
New Listings

+65%

Change in
Closed Sales

+23%

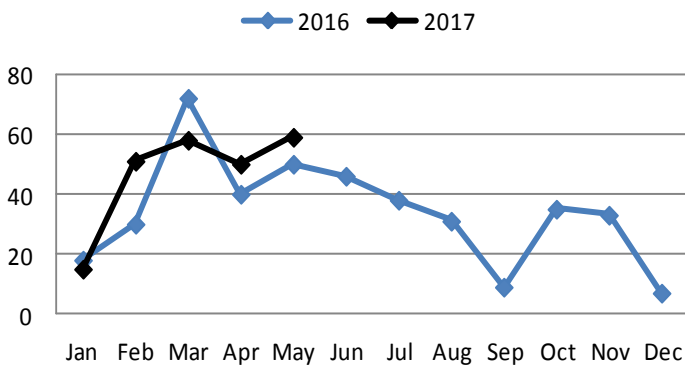
Change in
Days on Market

May

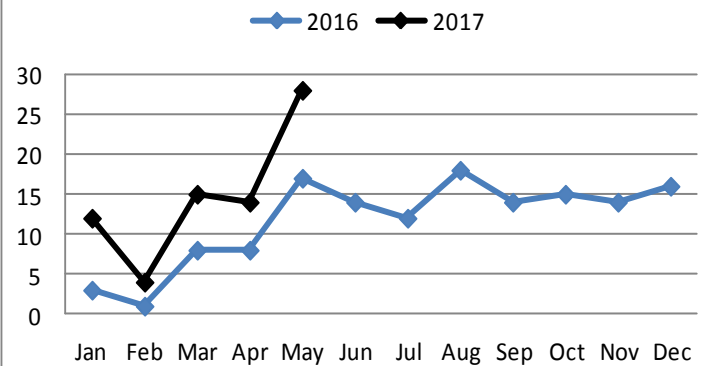
Year to Date

	2016	2017	+/-	2016	2017	+/-
New Listings	50	59	+18%	212	230	+8%
Closed Sales	17	28	+65%	37	74	+100%
Median Sales Price	\$60K	\$69K	+15%	\$58K	\$63K	+9%
Average Sales Price	\$94K	\$81K	-14%	\$79K	\$96K	+22%
Avg. % of Original List Price Received	88%	92%	+4%	88%	87%	-1%
Average Days on Market Until Sale	243	300	+23%	330	405	+23%

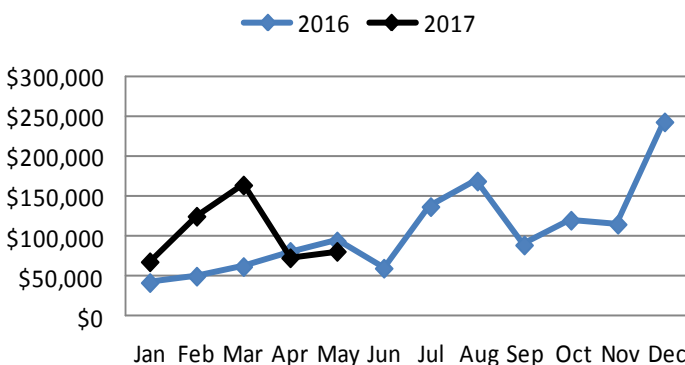
New Listings



Closed Sales



Average Sales Price



Average Days on Market

